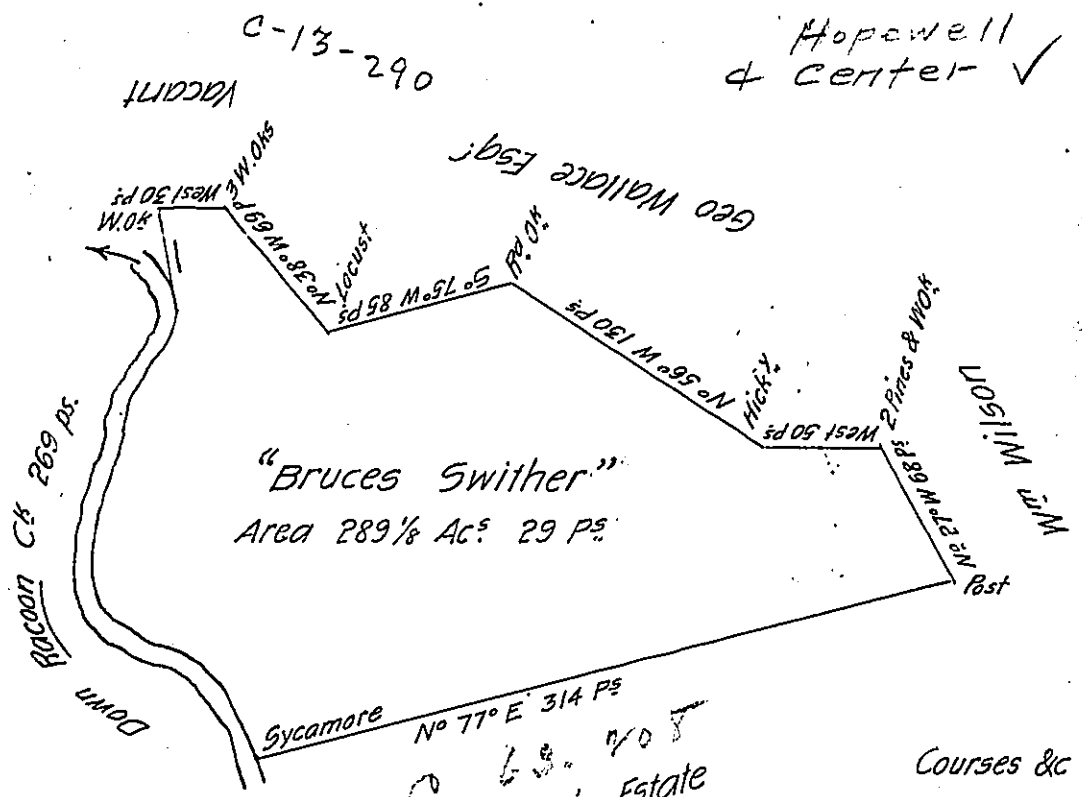


On Indep<sup>e</sup> skel.

BEAVER (Pg. 5-6)

Hopewell  
& Center ✓

(11)  
CGI-176



Calender's Estate

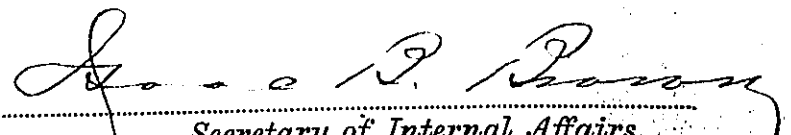
- Courses &c up y<sup>e</sup> Ck
- (1.) - 5° 10' E 44 P<sup>s</sup> (2.) 5° 17' W 124 D<sup>s</sup>
  - (3.) - 5° 45' E 30 D<sup>s</sup> (4.) 5° 60' E 24 D<sup>s</sup>
  - (5.) - 5° 30' E 47 D<sup>s</sup> to ye Sycamore
- |       |     |
|-------|-----|
| 121   | 148 |
| 148   |     |
| <hr/> |     |
| 269   |     |

A Draught of a Survey called "Bruces Swither" situate on Raccoon Ck in Washington County contg. 289 Ac<sup>s</sup> 29 P<sup>s</sup> ~~strict Mesa~~ and the usual Allowance for Roads &c. executed Sept. 12<sup>th</sup> 1786 in Pursuance of a Warrant granted to Chas<sup>s</sup> Bruce for 300 Ac<sup>s</sup> dated Feb<sup>y</sup> 10 1786.

Presley Nevill }  
Matt<sup>w</sup> Ritchie } D. Ss.

Jno Lukens Esq<sup>r</sup> S. Gen<sup>l</sup>

IN TESTIMONY that the above is a copy of the original remaining on file in the Department of Internal Affairs of Pennsylvania, made conformably to an Act of Assembly approved the 16th day of February, 1833, I have hereunto set my Hand and caused the Seal of said Department to be affixed at Harrisburg, this fifteenth day of February 1904.

  
Secretary of Internal Affairs.